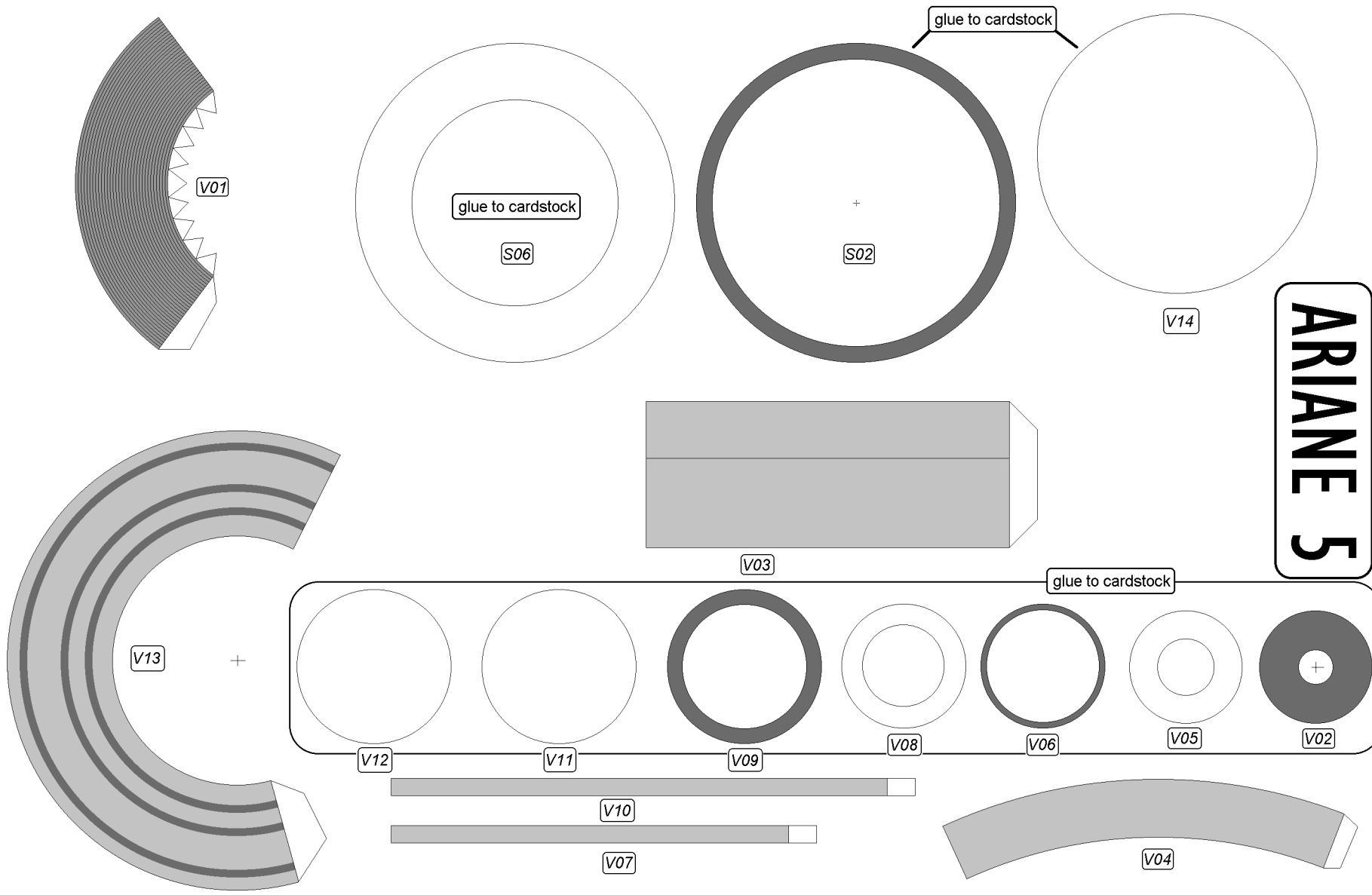
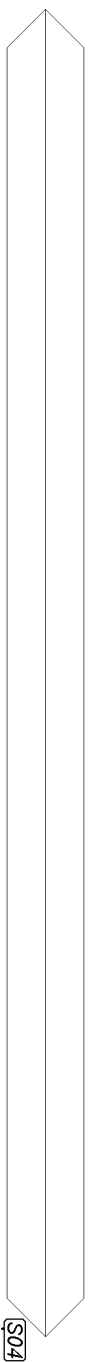


ARIANE 5



1 cm **1 inch**



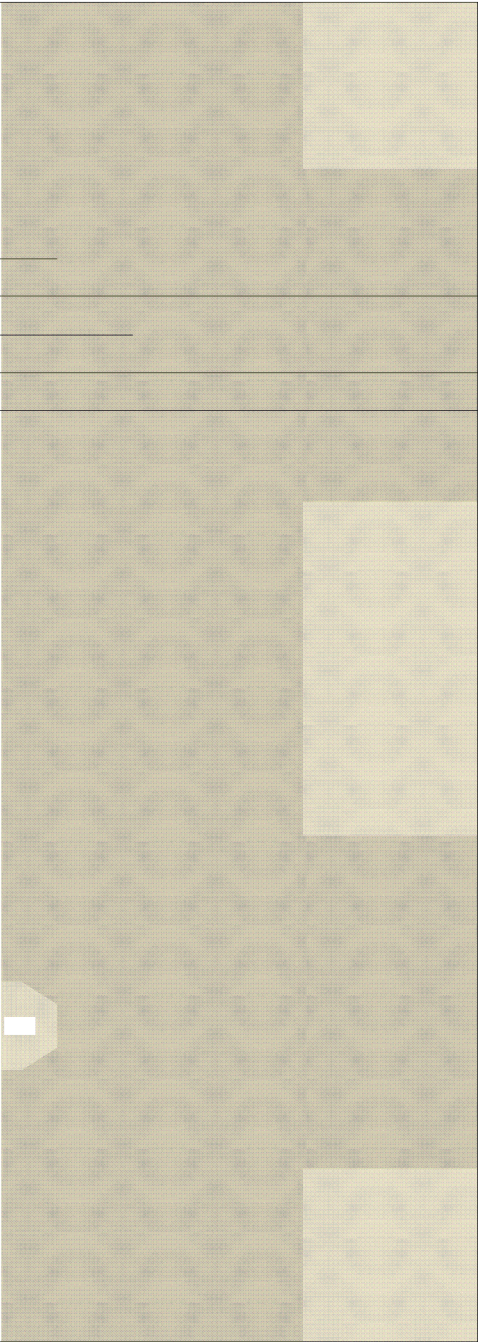
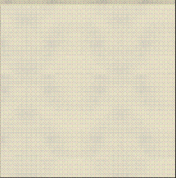
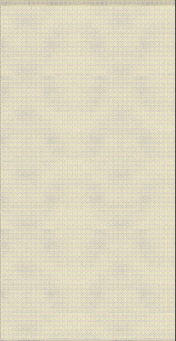
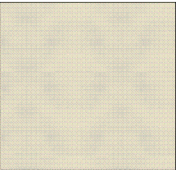
S04



S05

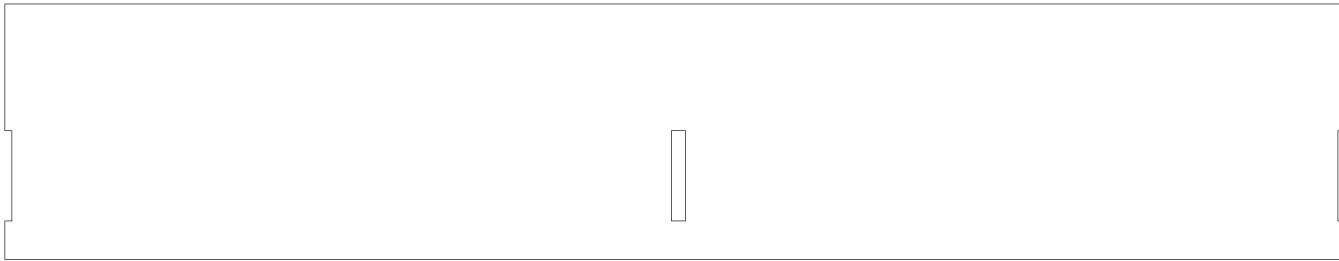
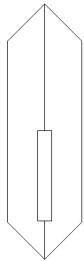
S03

S01

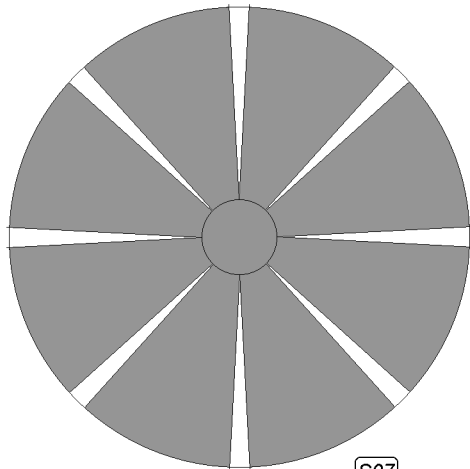




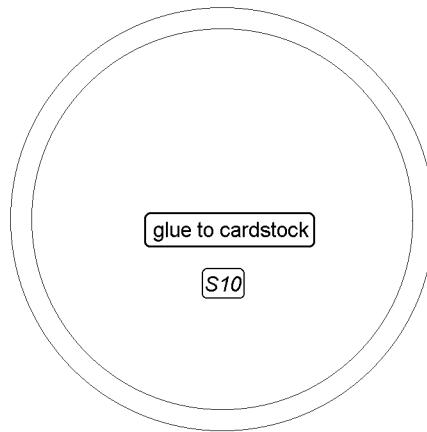
S11



S08



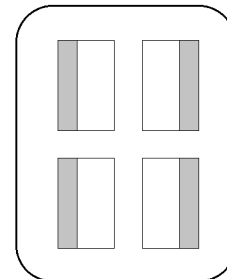
S07



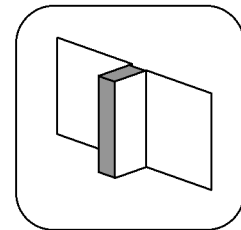
glue to cardstock

S10

S09



glue to cardstock leaving white area free



ARIANE 5

glue to cardstock



B07



esa



esa



cnes



cnes

glue to cardstock

B09

glue to cardstock

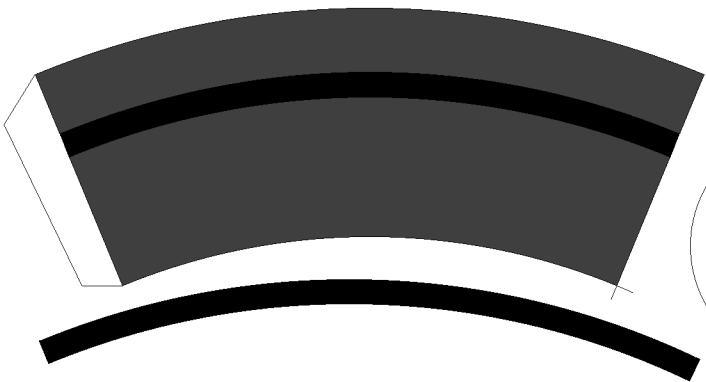
B06

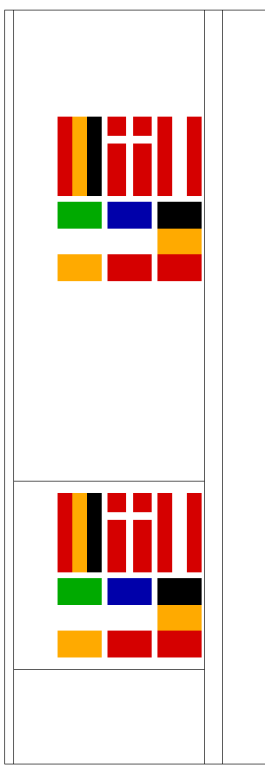
print 2X

ARIANE 5

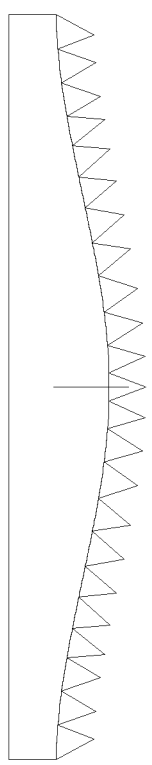
1 cm

1 inch

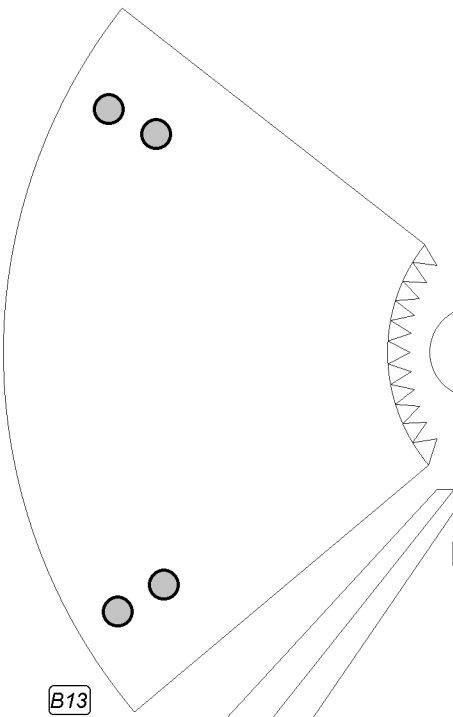




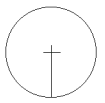
B10



glue to cardstock

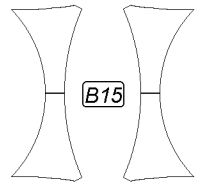


B13

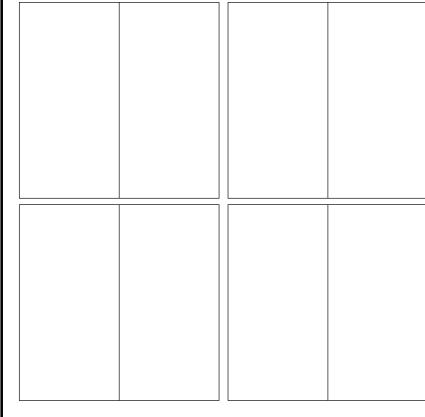


B14

glue to 2mm cardstock



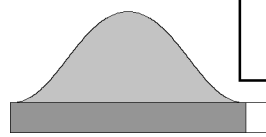
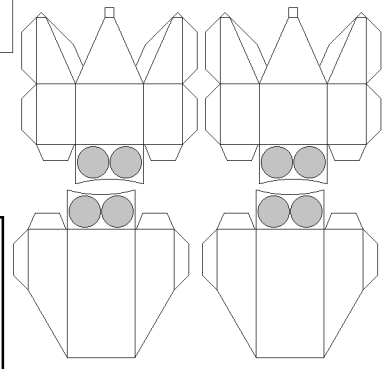
B15



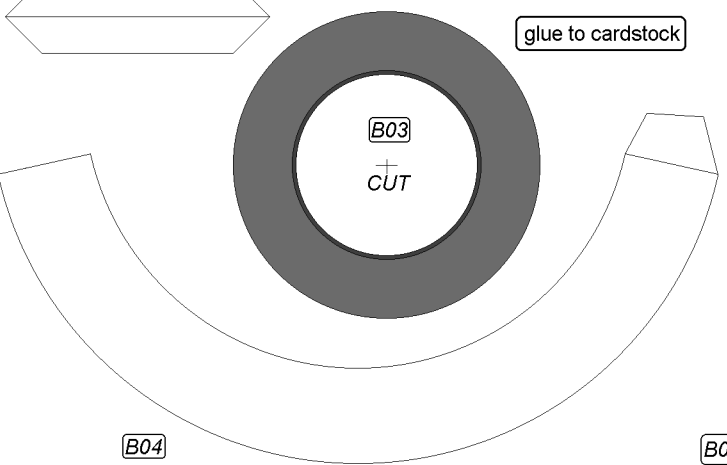
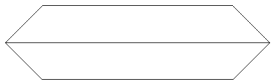
ROLL ON 3MM DRILL

I.D.K.W.I.S

SEE PICTURE

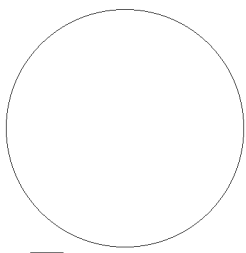


V15 SEE PICTURE



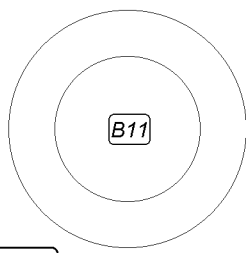
B03

+ CUT

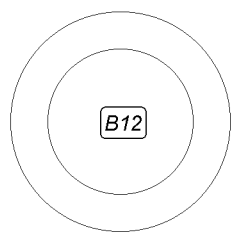


B05

glue to cardstock

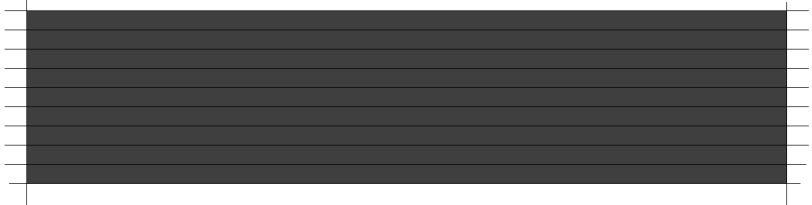


B11



B12

glue to cardstock



B08

1 cm

1 inch

print 2X

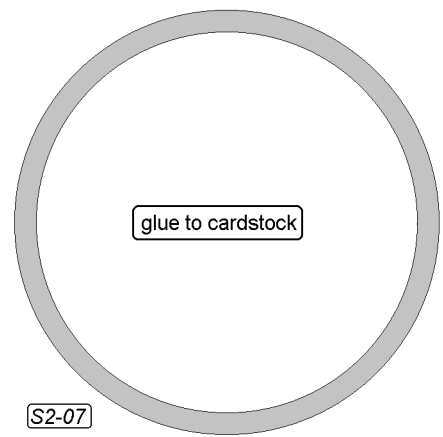
ARIANE 5

ARIANE 5

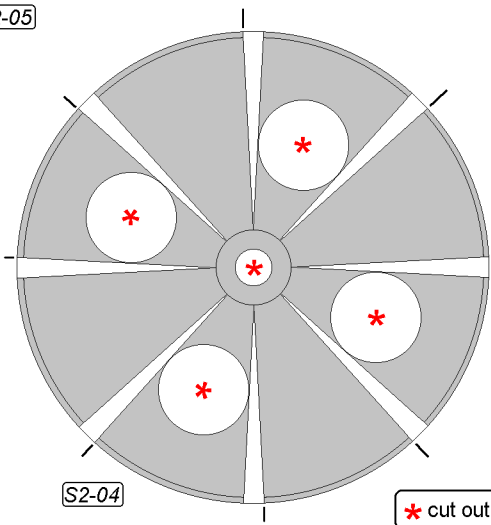
2ND STAGE

S2-03

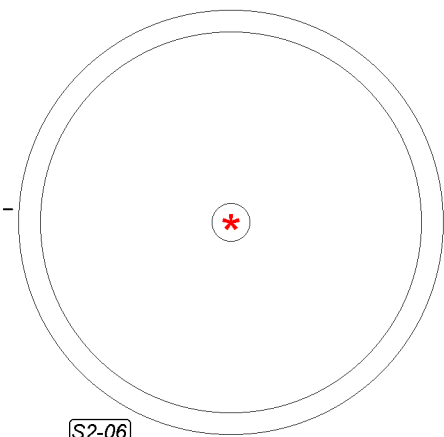
S2-05



S2-07

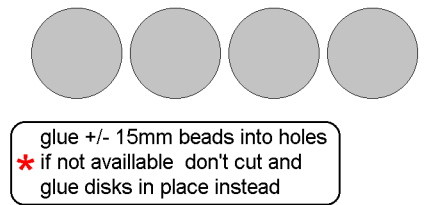


S2-04



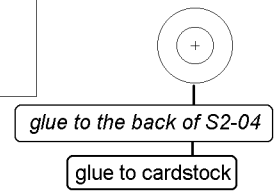
S2-06

* cut out
— cut here



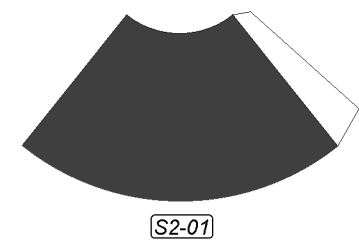
S2-02

glue +/- 15mm beads into holes
* if not available don't cut and
glue disks in place instead

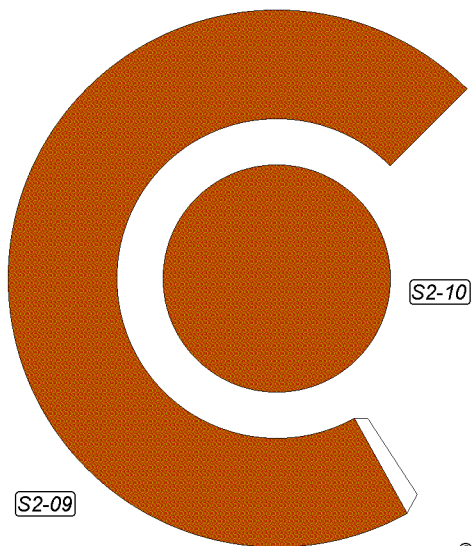


glue to the back of S2-04

glue to cardstock



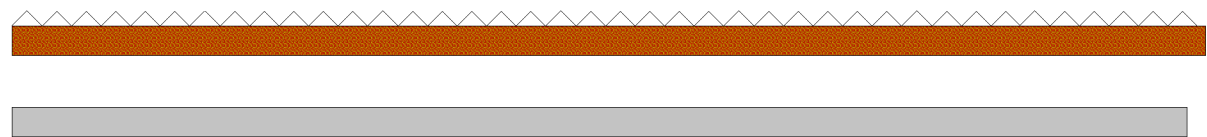
S2-01



S2-10

S2-09

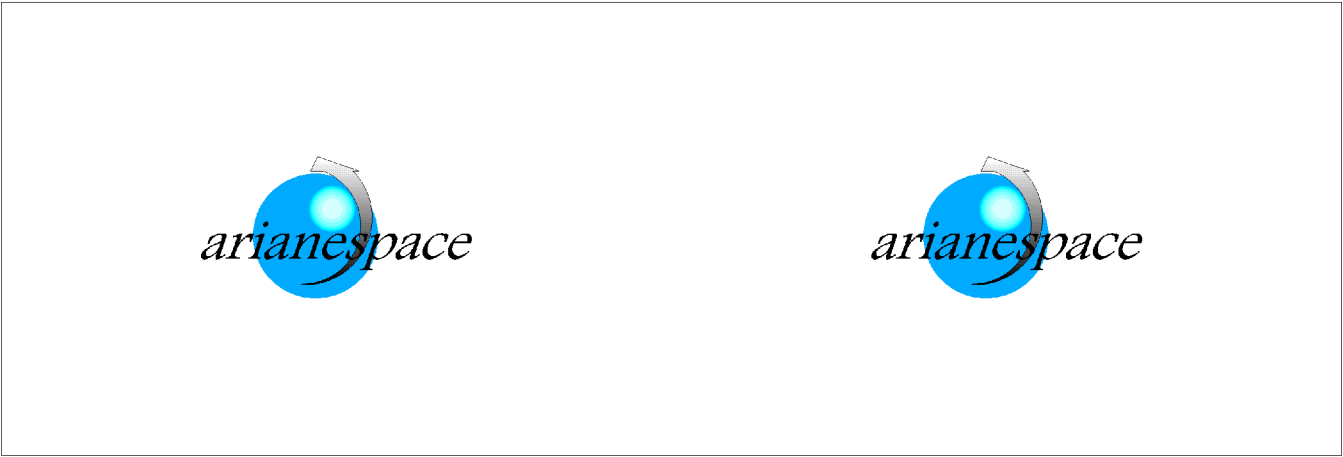
S2-08



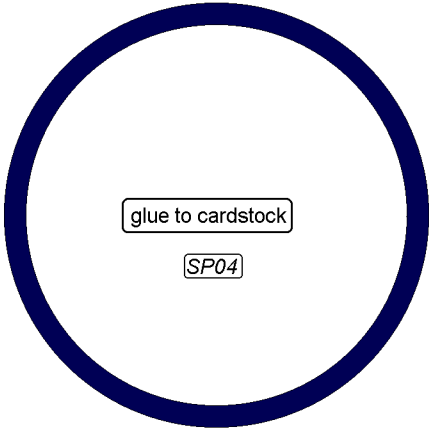
rotate 180° and glue to the back of S2-08

ARIANE 5

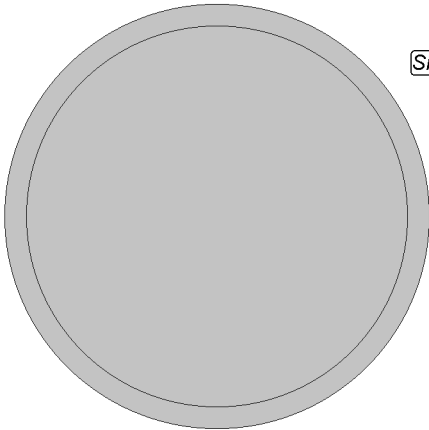
Speltra 5660



SP02



SP03



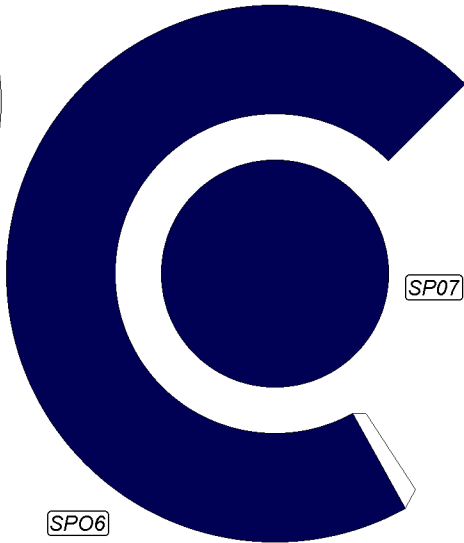
glue to cardstock

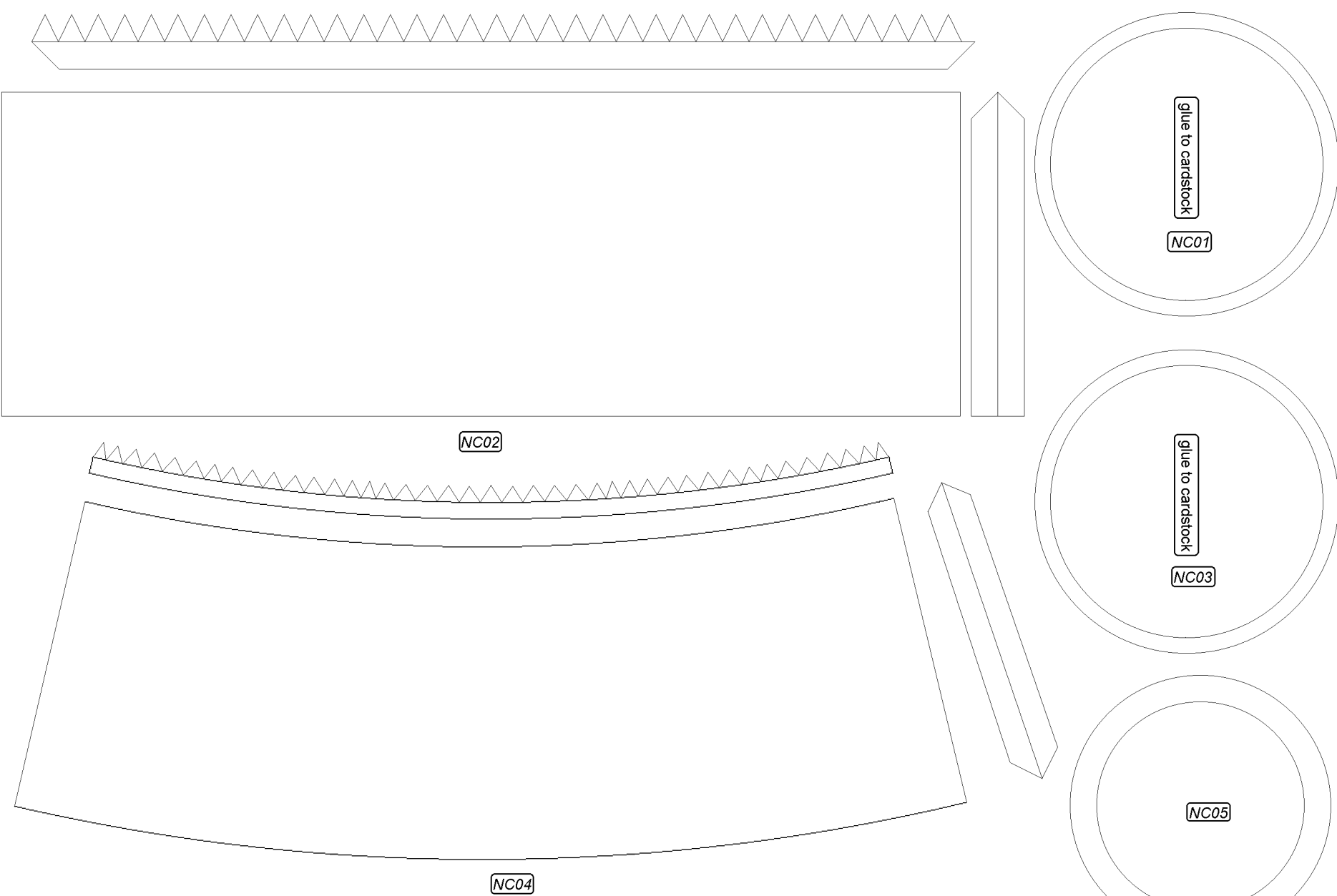


SP05



SP07



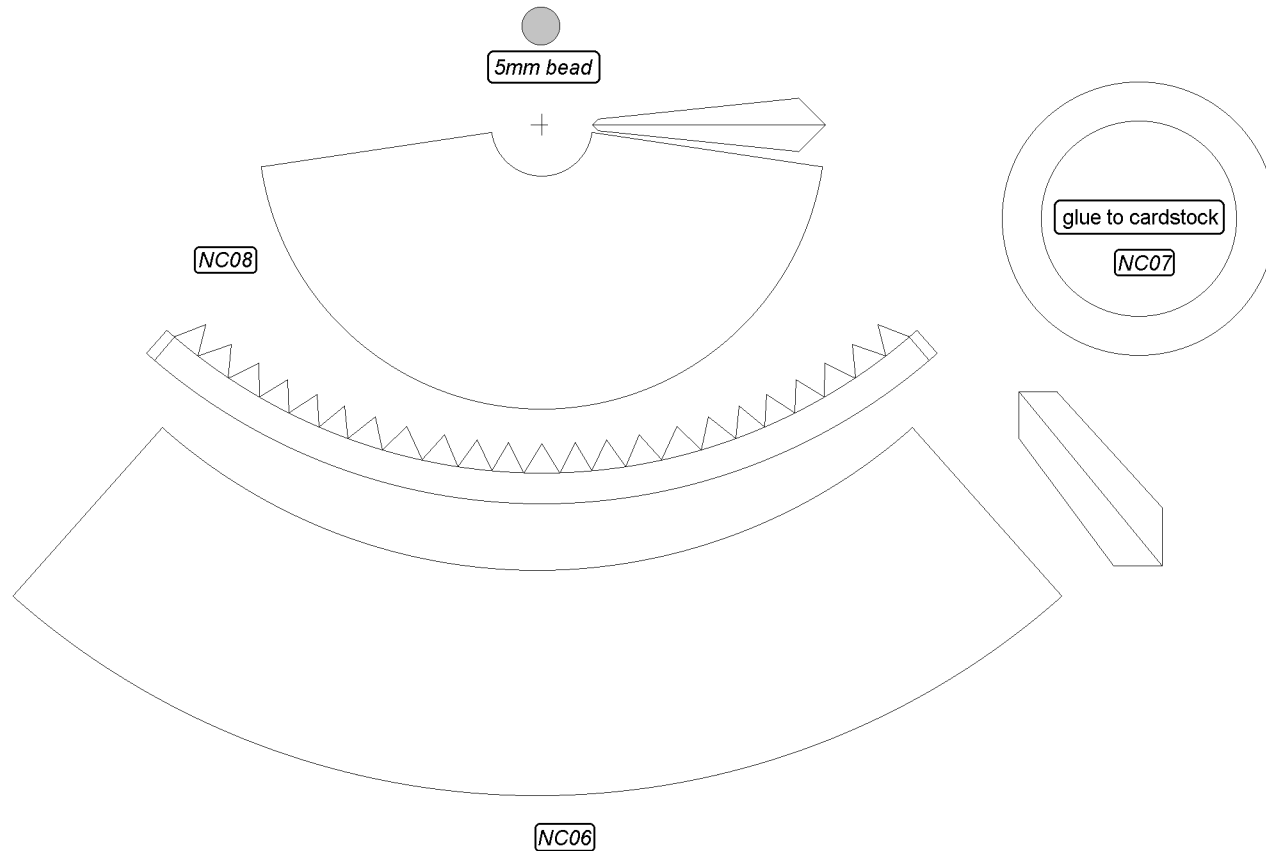


nose-cone sht.1

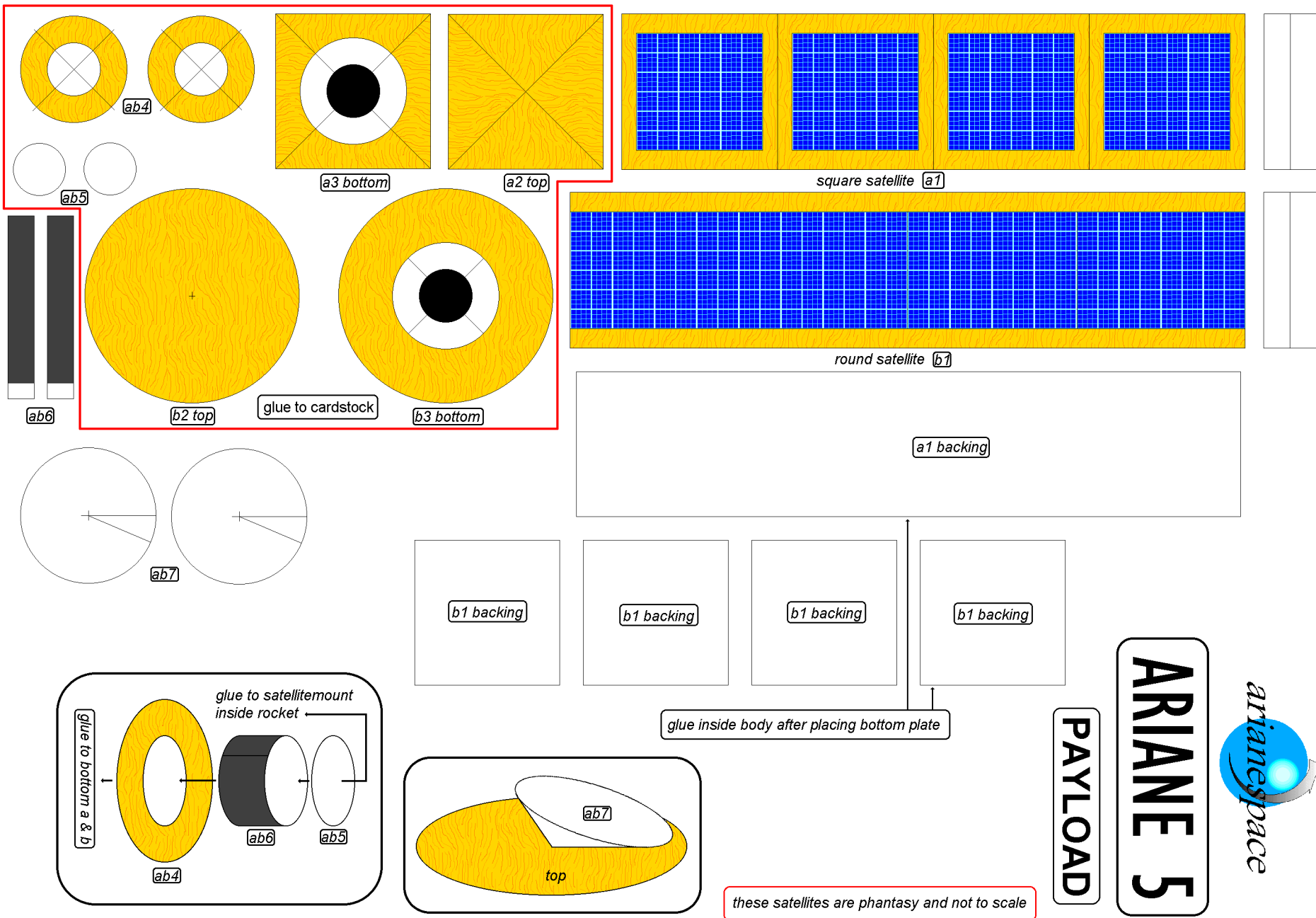
© 2003 Drawn by T.Noteboom This cardmodel is only for personal and not for commercial use

1 cm

1 inch



nose-cone sht.2



these satellites are phantasy and not to scale



ARIANE 5

PAYLOAD