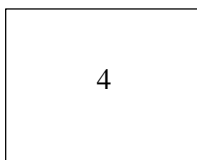
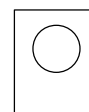
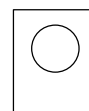


Optional part 4

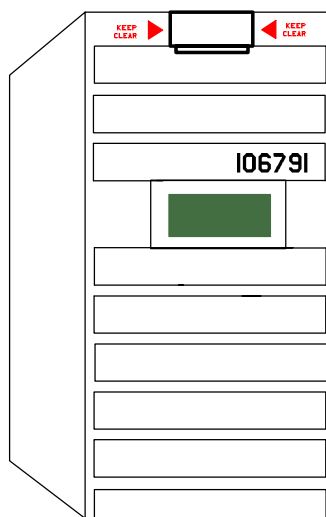
1/48th Scale ISSCV, Cargo Version
Drawn by Gary D. Sinning
Page 5 of 9



4

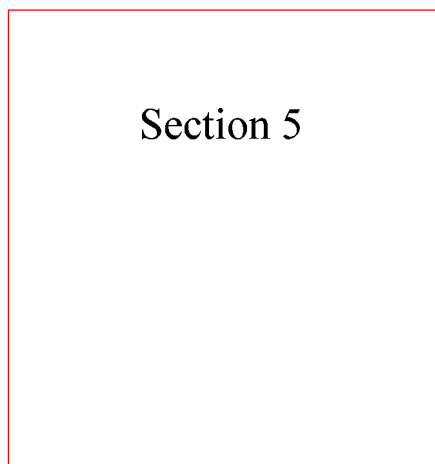


Optional part 5

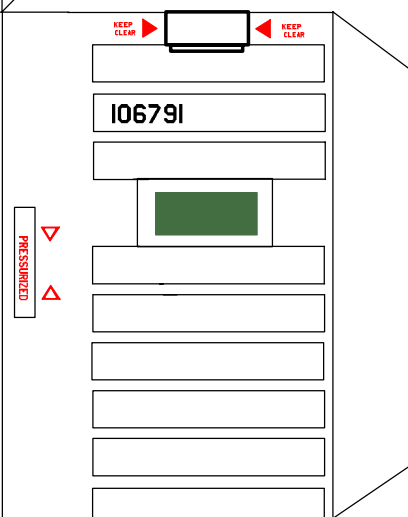


106791

PRESSURIZED

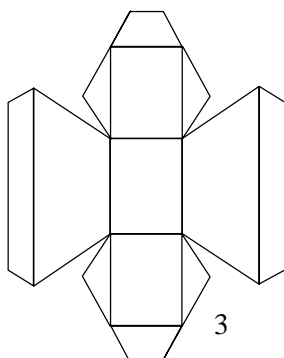


Section 5

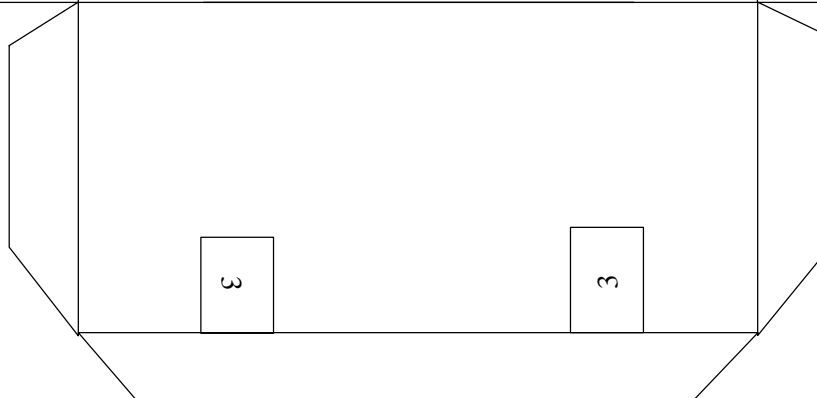


106791

PRESSURIZED

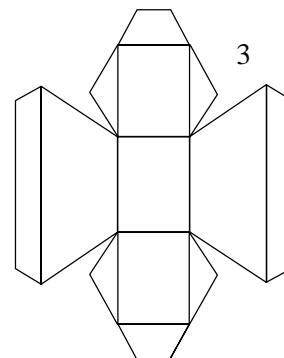


3

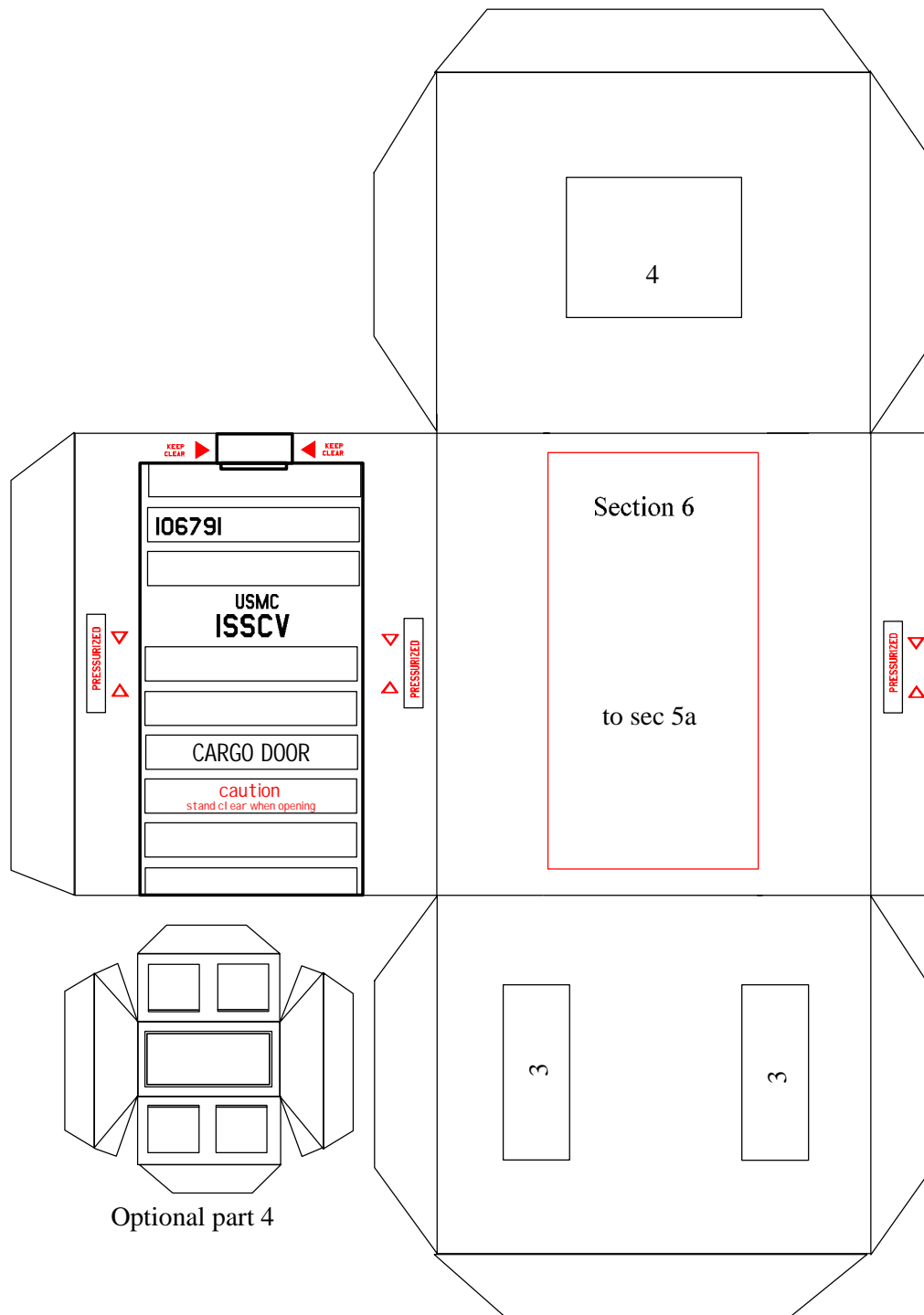


3

3

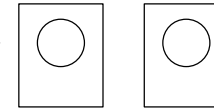


3

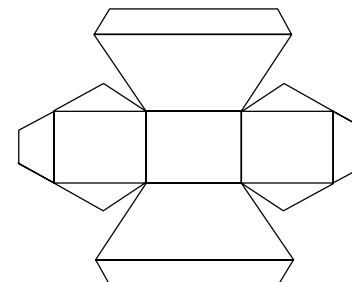


Option Part 5

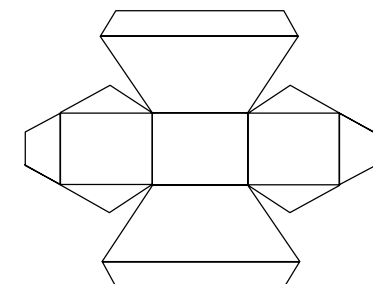
Construct using 5 layers of scrap cardstock for correct thickness
Punch each hole as a layer is added. Do not punch the 5th hole.
Punch 5th hole after trimming pattern..

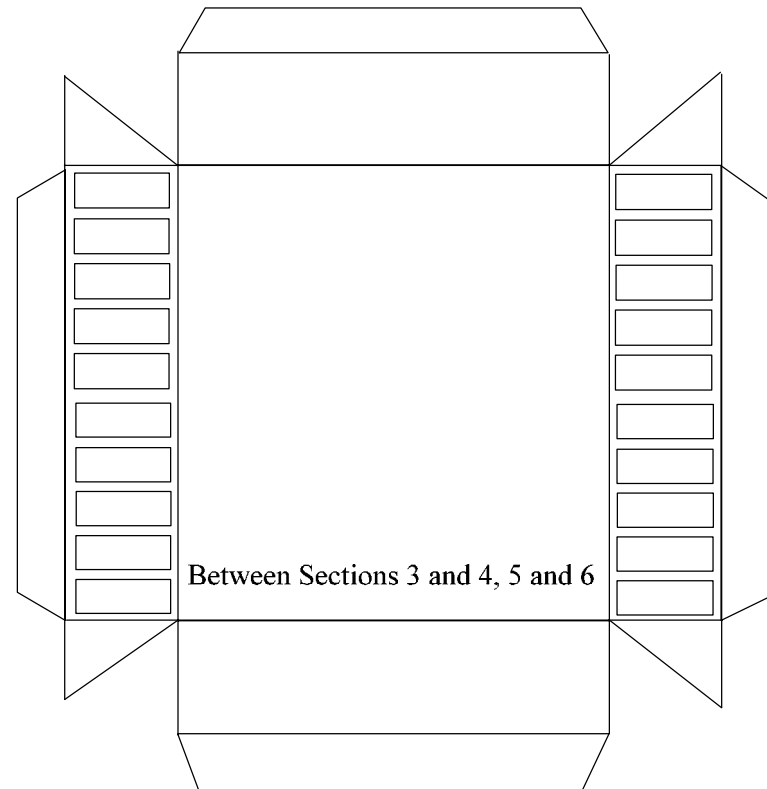
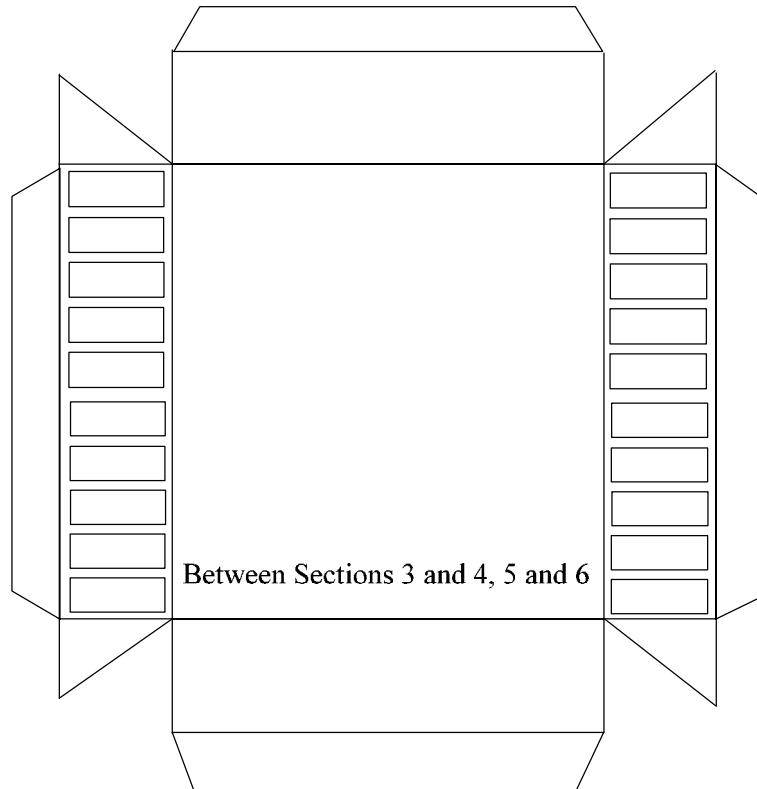


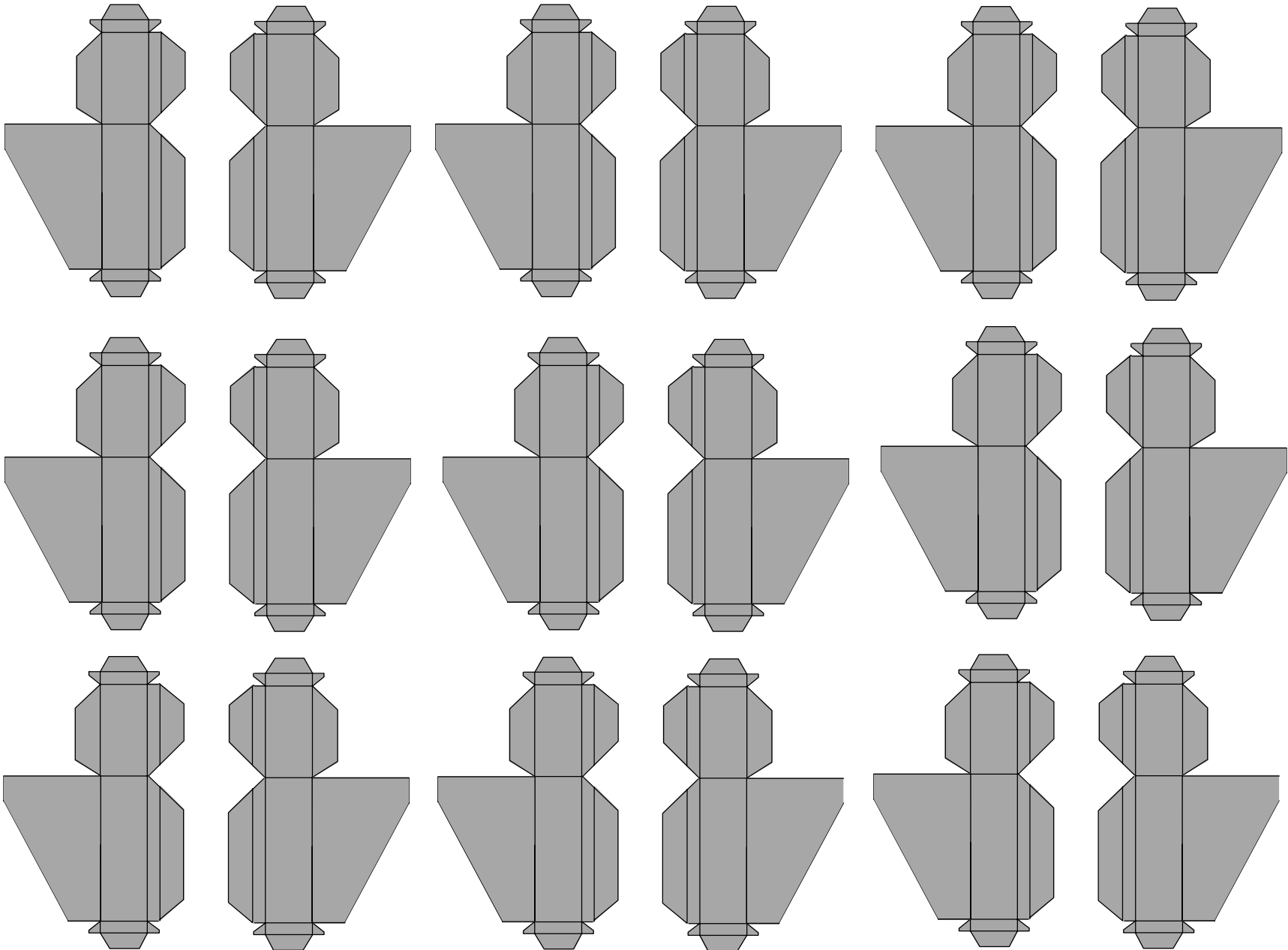
1/48th Scale ISSCV, Cargo Version
Drawn by Gary D. Sinning
Page 6 of 9



3

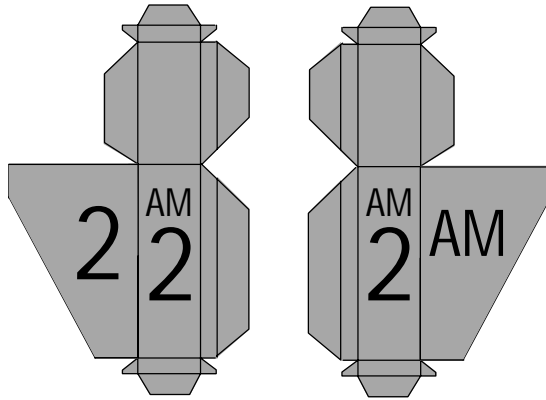




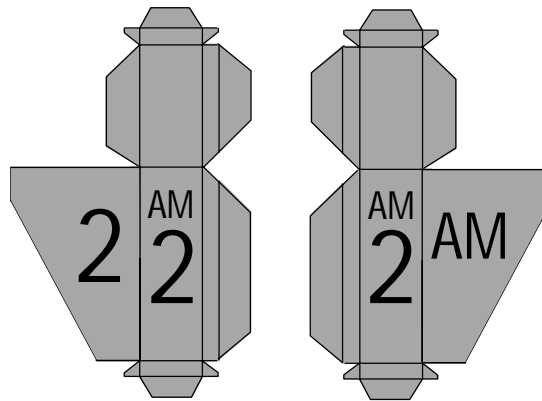


Uppper Corner Sections: Cargo Pod

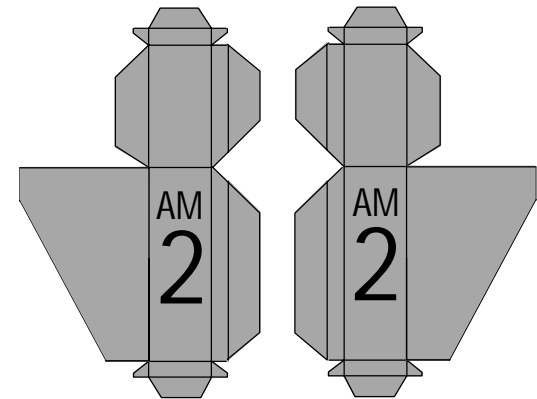
Section 1b front



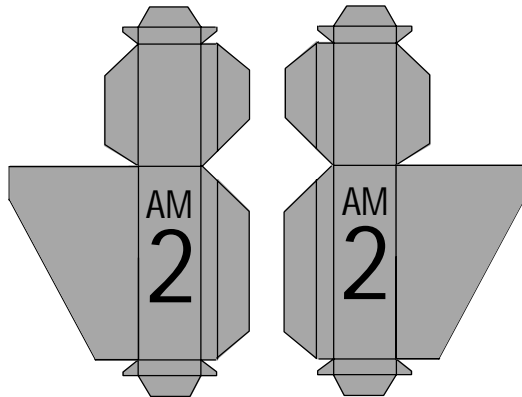
Section 4b front



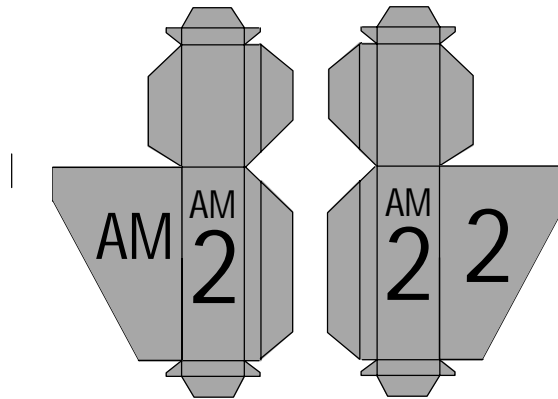
Section 6b front



Section 3b to rear



Section 5b to rear



Section 6b to rear

