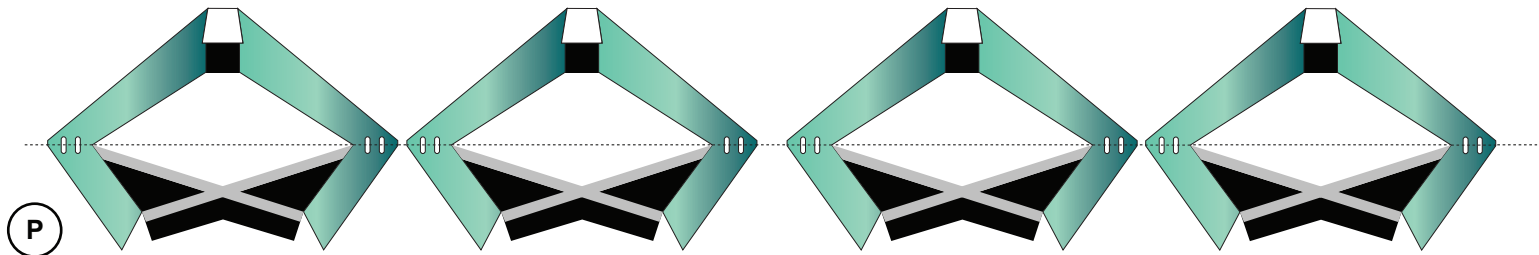
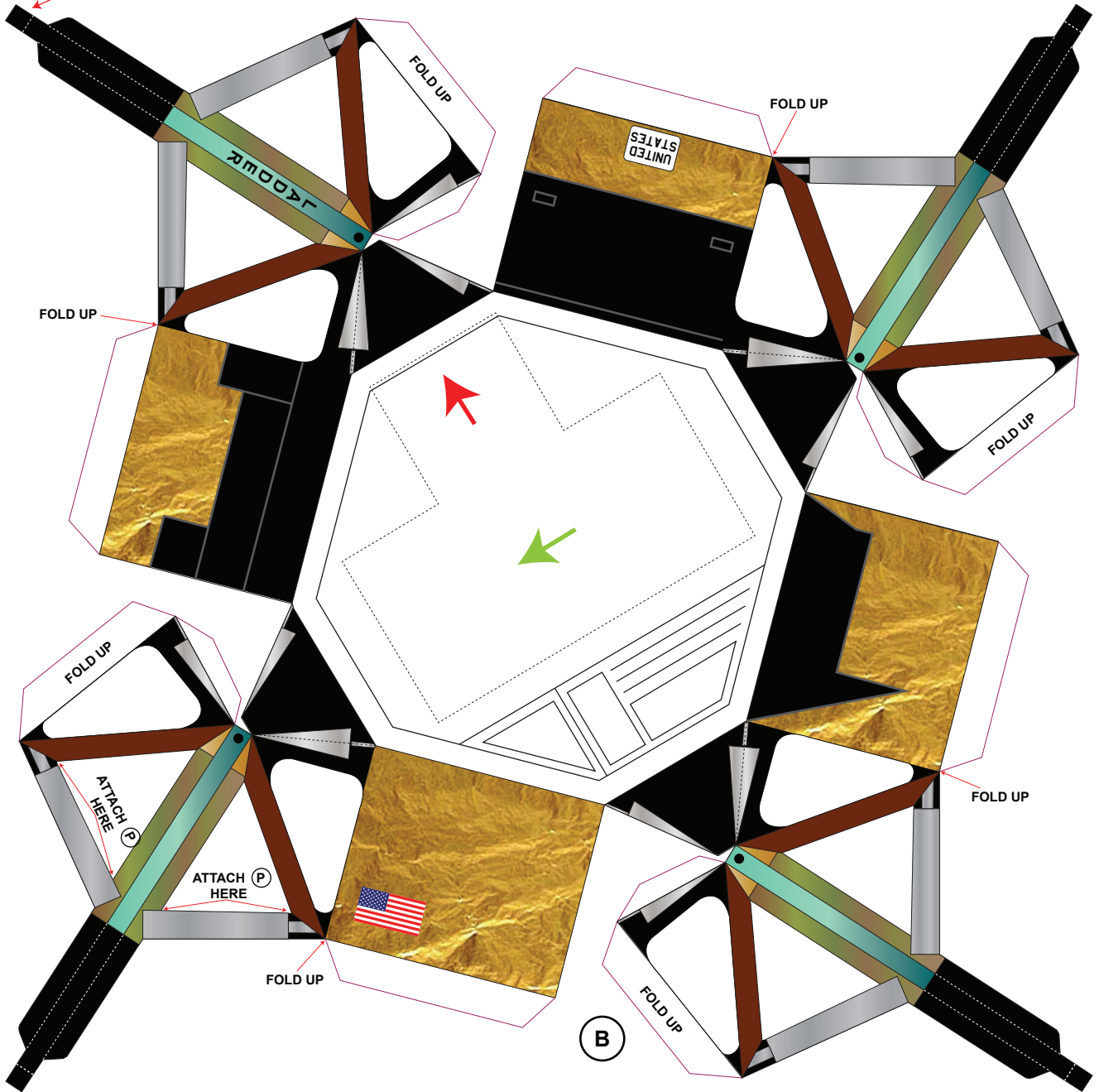


INSERT DISK Q AND THE FOLD OVER



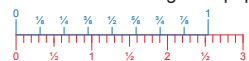
FOLD IN HALF AND CUT OUT CENTRE
ATTACH TO PART (B) AS INDICATED

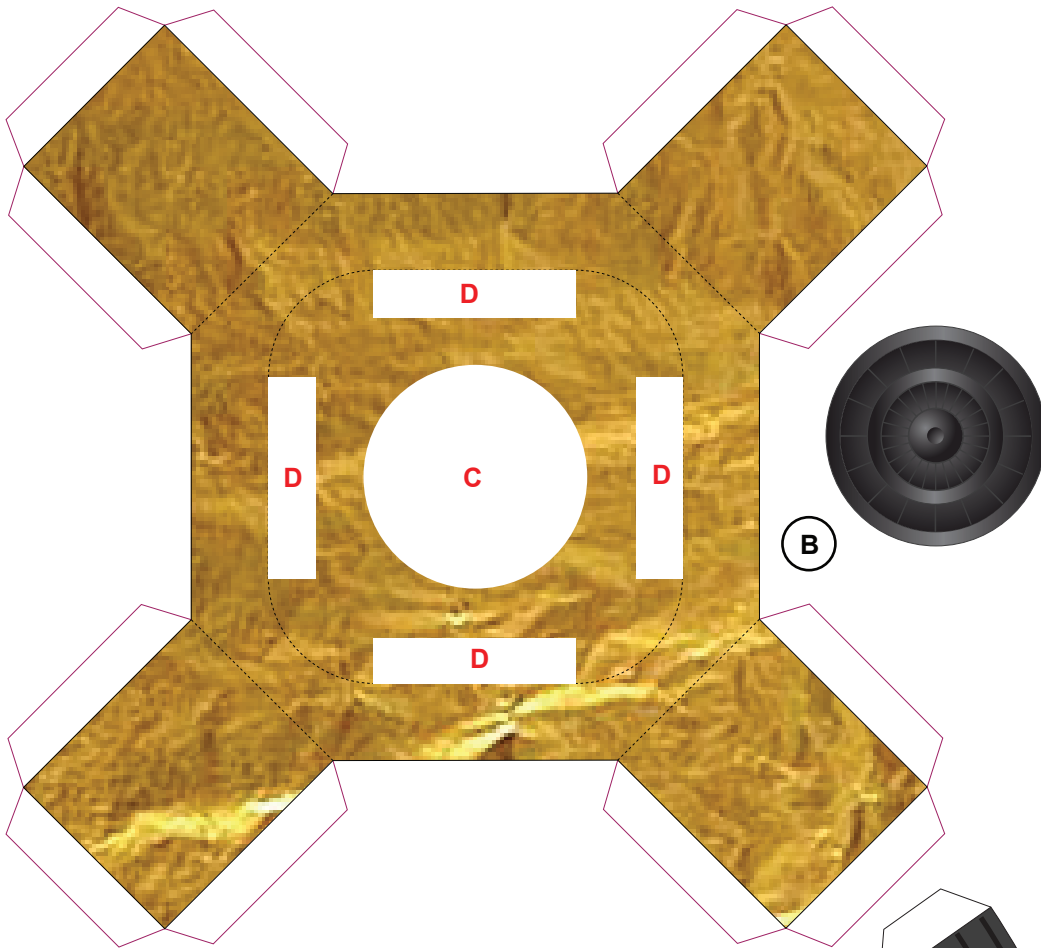


Apollo / Saturn V

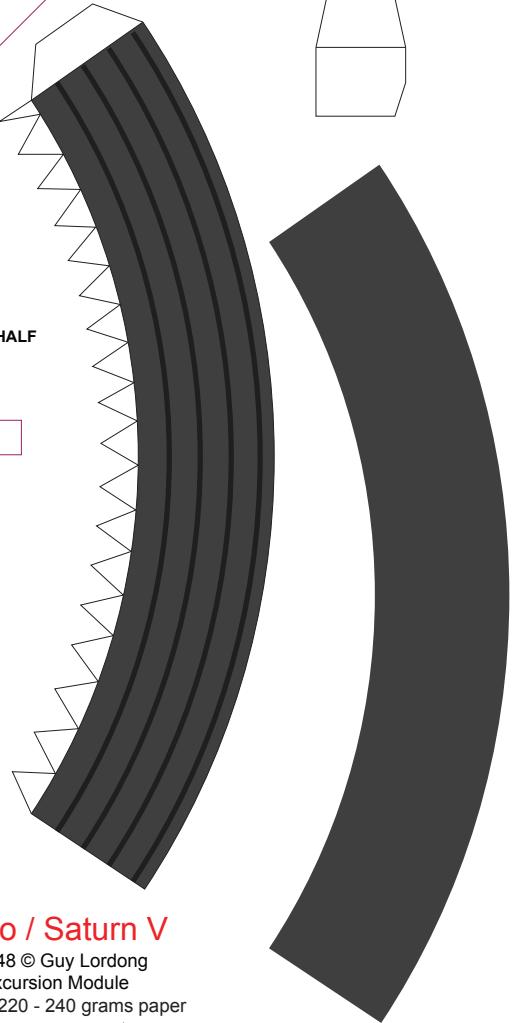
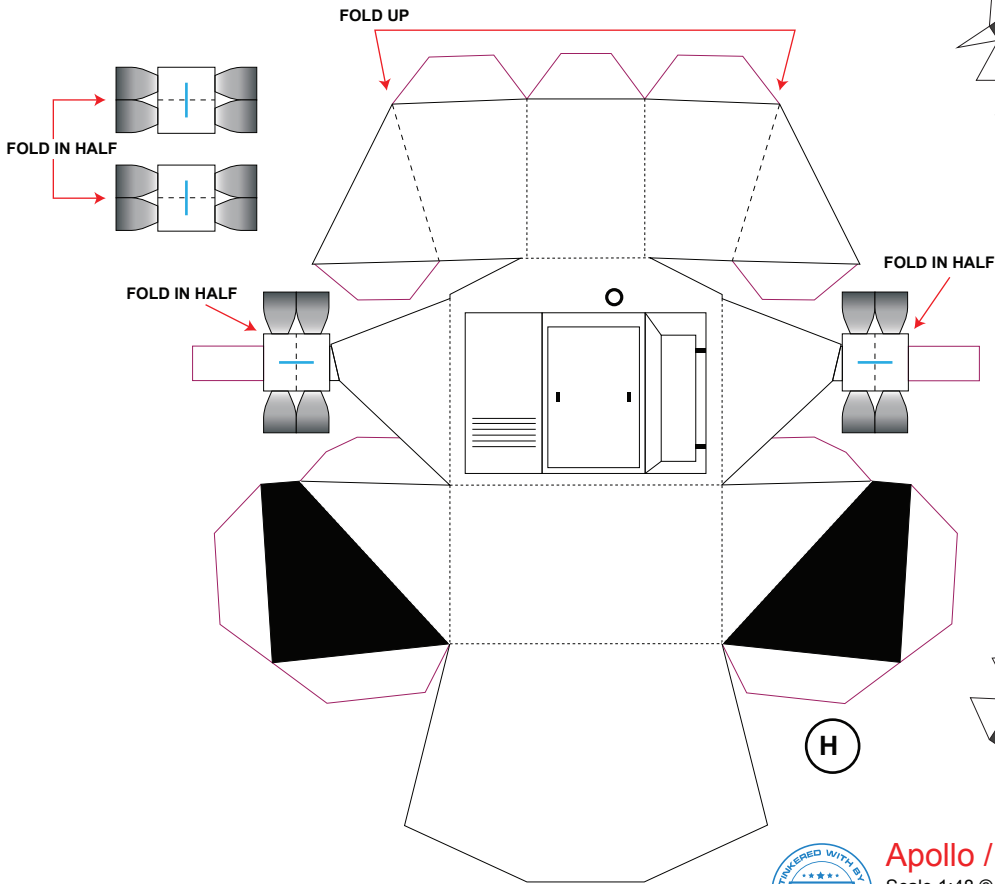
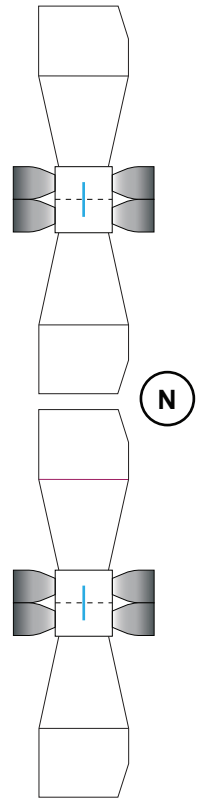
Scale 1:48 © Guy Lordong
Lunar Excursion Module
Print on 220 - 240 grams paper

Page 1

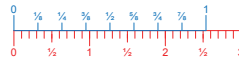


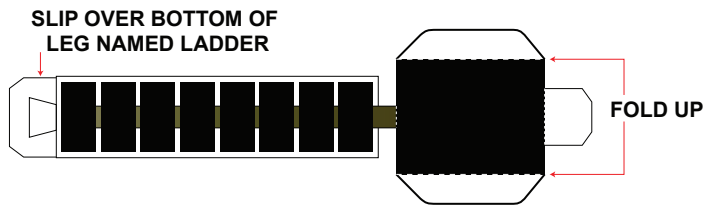
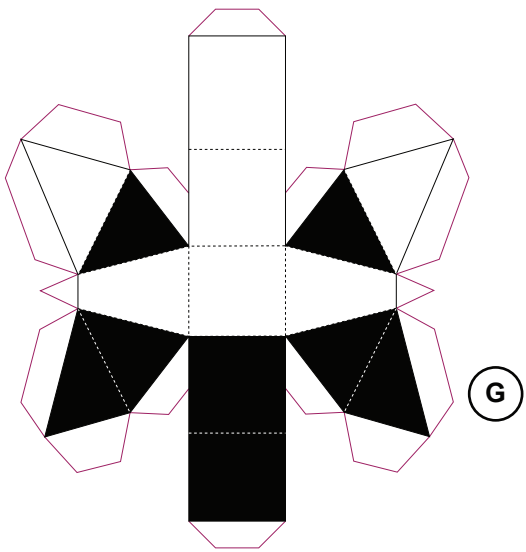
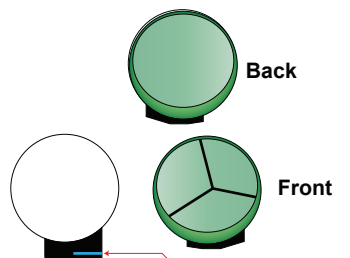
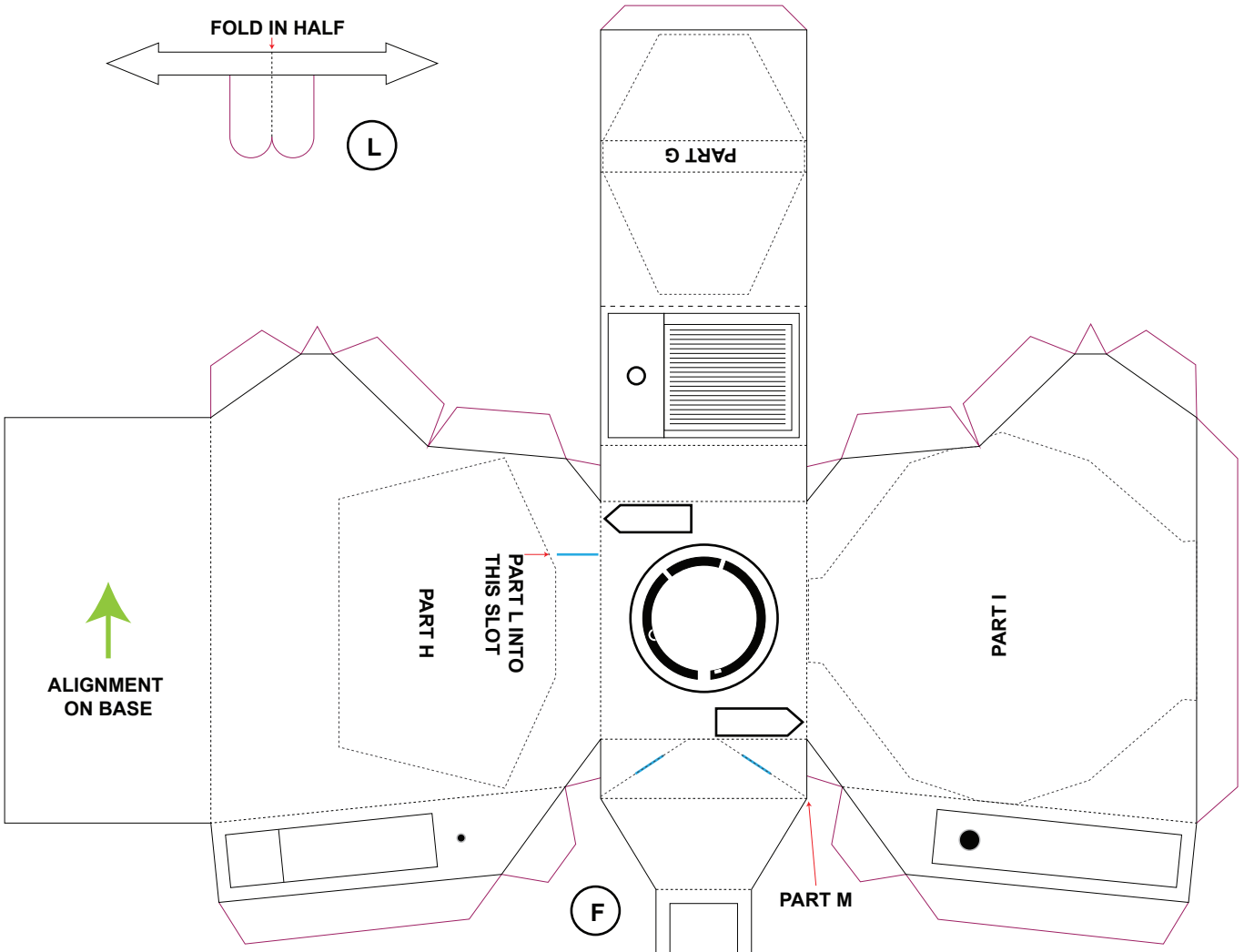
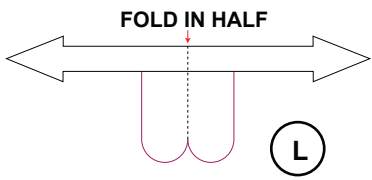


FIT PIECE N INTO SLOT OF PART J & K

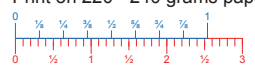


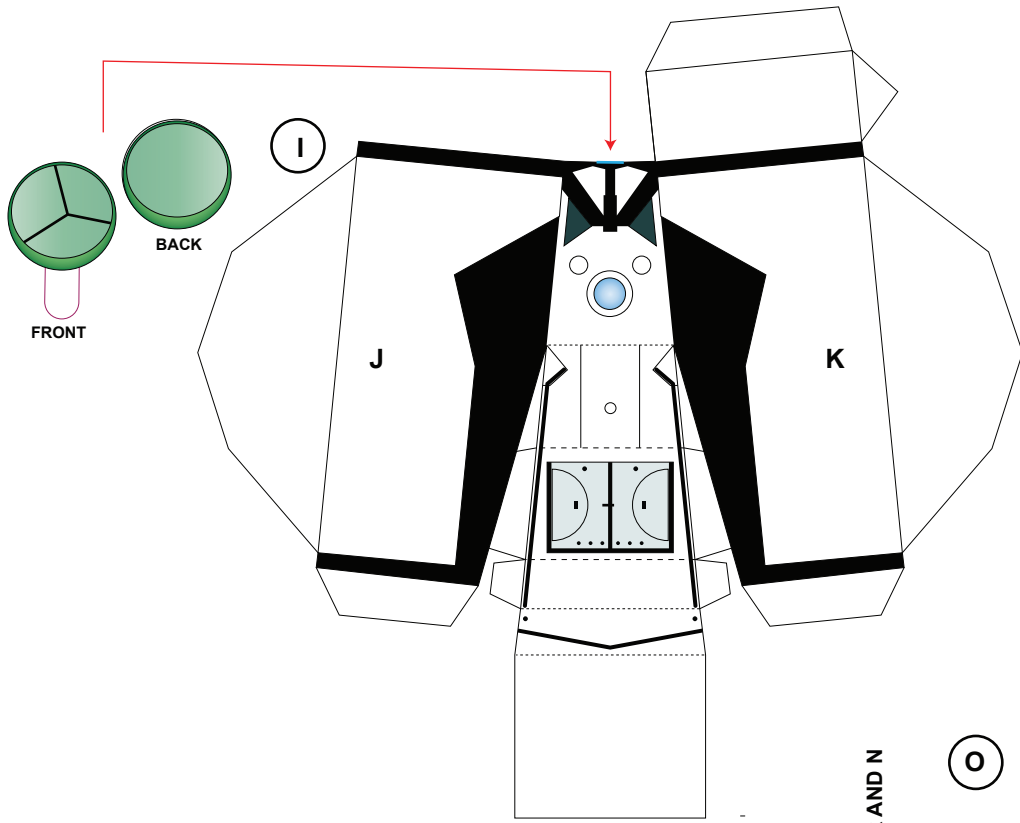
Apollo / Saturn V
 Scale 1:48 © Guy Lordong
 Lunar Excursion Module
 Print on 220 - 240 grams paper



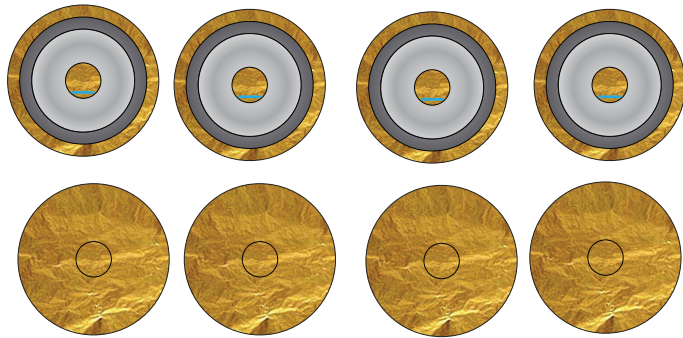


Apollo / Saturn V
 Scale 1:48 © Guy Lordong
 Lunar Excursion Module
 Print on 220 - 240 grams paper



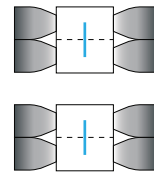


Q

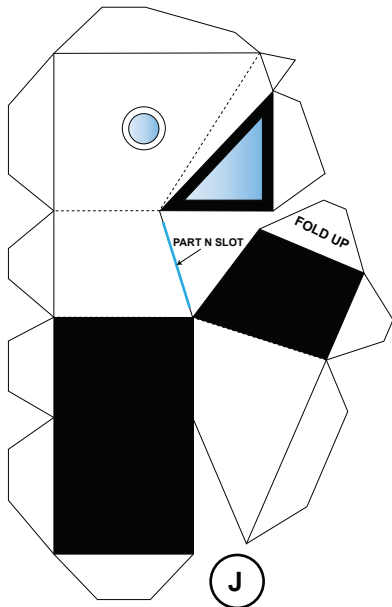


SLIDE TOGETHER WITH PART R AND N

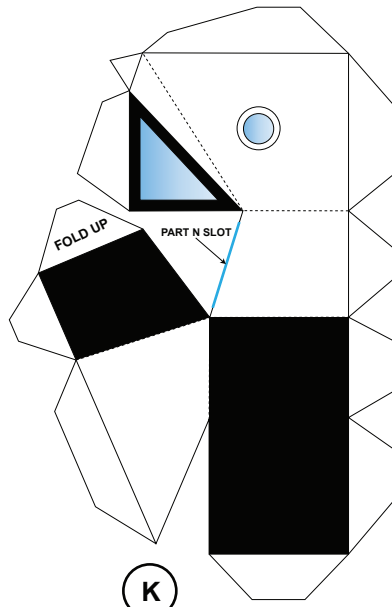
O



FOLD IN HALF



J

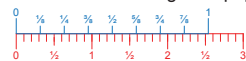


K



Apollo / Saturn V

Scale 1:48 © Guy Lordong
Lunar Excursion Module
Print on 220 - 240 grams paper



D