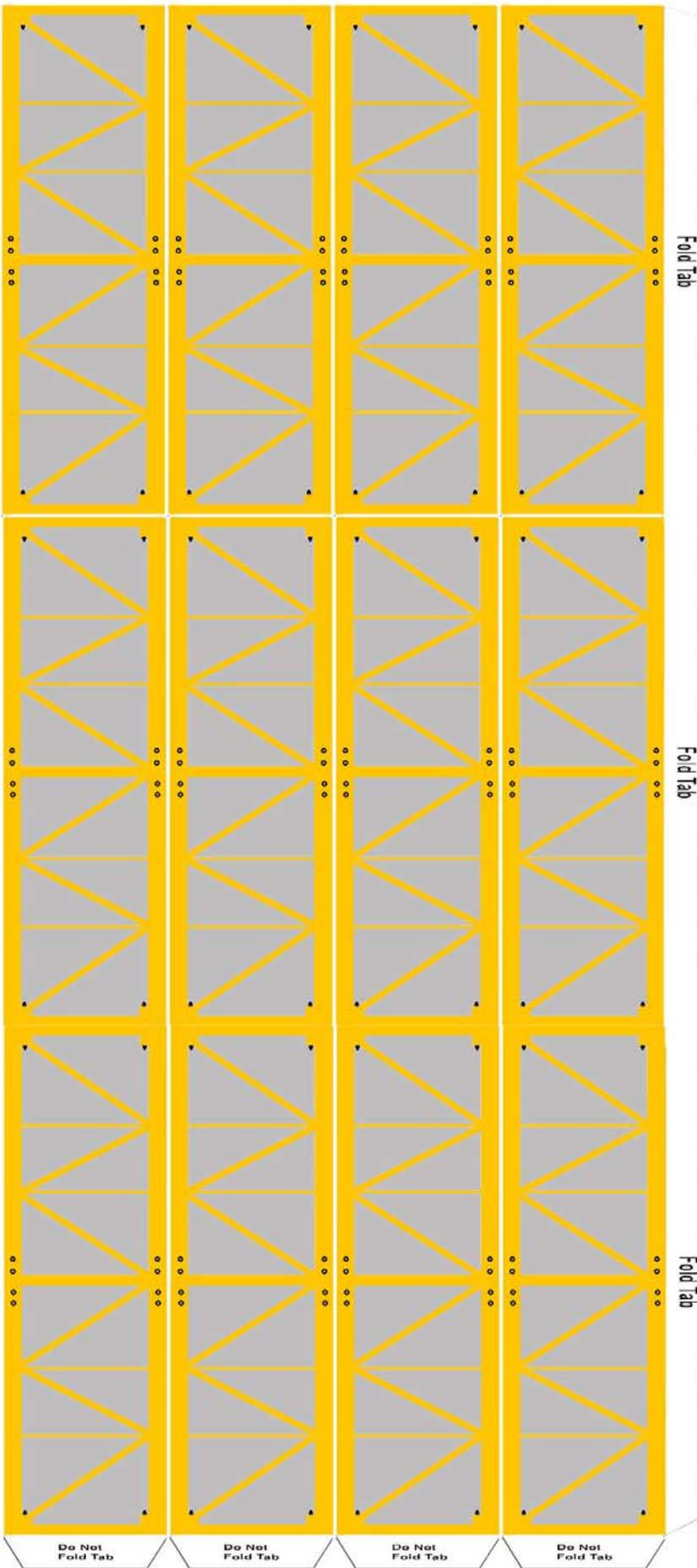


© 2008 George Blanchette  
Not for sale or Commercial Profit

Hoist Cable (Trim to desired length)



Main Tower Section

2

Fold

Fold

Fold

Insert this end into base and glue tabs to bottom

Fold Tab

Fold Tab

Fold Tab

Do Not Fold Tab

Do Not Fold Tab

Do Not Fold Tab

Do Not Fold Tab

Do Not Fold Tab

Do Not Fold Tab

Do Not Fold Tab

Do Not Fold Tab

Do Not Fold Tab

Support cable

11

© 2008 George Blanchette  
Not for sale or Commercial Profit

### Tower Sections

2

Optional Tower Extensions

Do Not Fold Tab

Do Not Fold Tab

Do Not Fold Tab

Do Not Fold Tab

Do Not Fold Tab

Do Not Fold Tab

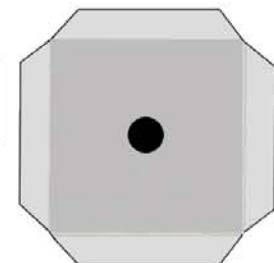
Do Not Fold Tab

Do Not Fold Tab

Do Not Fold Tab

Fold Tab

Fold Tab



2A Top Cap

Fold Tab

Glue Cab to this side.  
Glue Head to other side.

5

© 2008 George Blanchette  
Not for sale or Commercial Profit



Allow to dry to this shape.

Fold around part 5 allowing to slide (do not glue)

First glue flat, then fold on lines

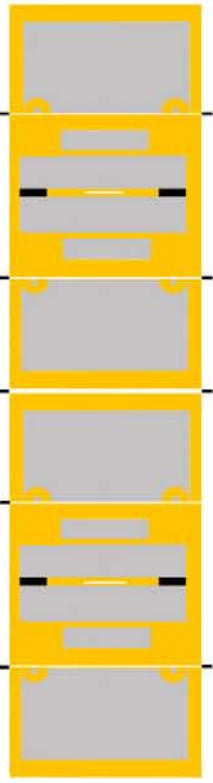
Glue inside jib heel end (5A)

Jib Heel Section

Fold Tab

5

Do Not Fold Tab  
Do Not Fold Tab  
Do Not Fold Tab



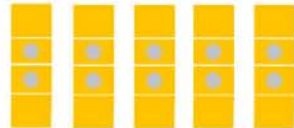
Trolley and Hook

6

Glue inside jib heel end (5A)

Optional Intermediate Jib Sections

5



Cable Support Tabs

Support cable

11

Do Not Fold Tab  
Do Not Fold Tab  
Do Not Fold Tab

Do Not Fold Tab  
Do Not Fold Tab  
Do Not Fold Tab

Do Not Fold Tab  
Do Not Fold Tab  
Do Not Fold Tab

6

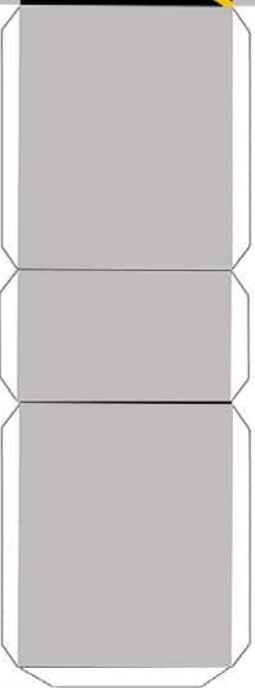
Hook



Insert and glue from under part 7

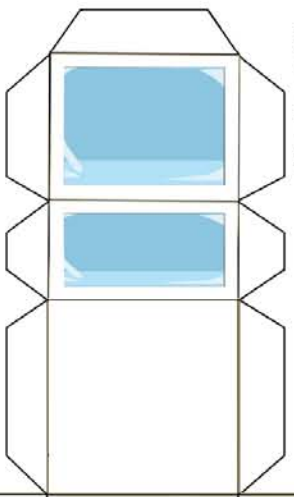
8

Jib Heel Counter Weight



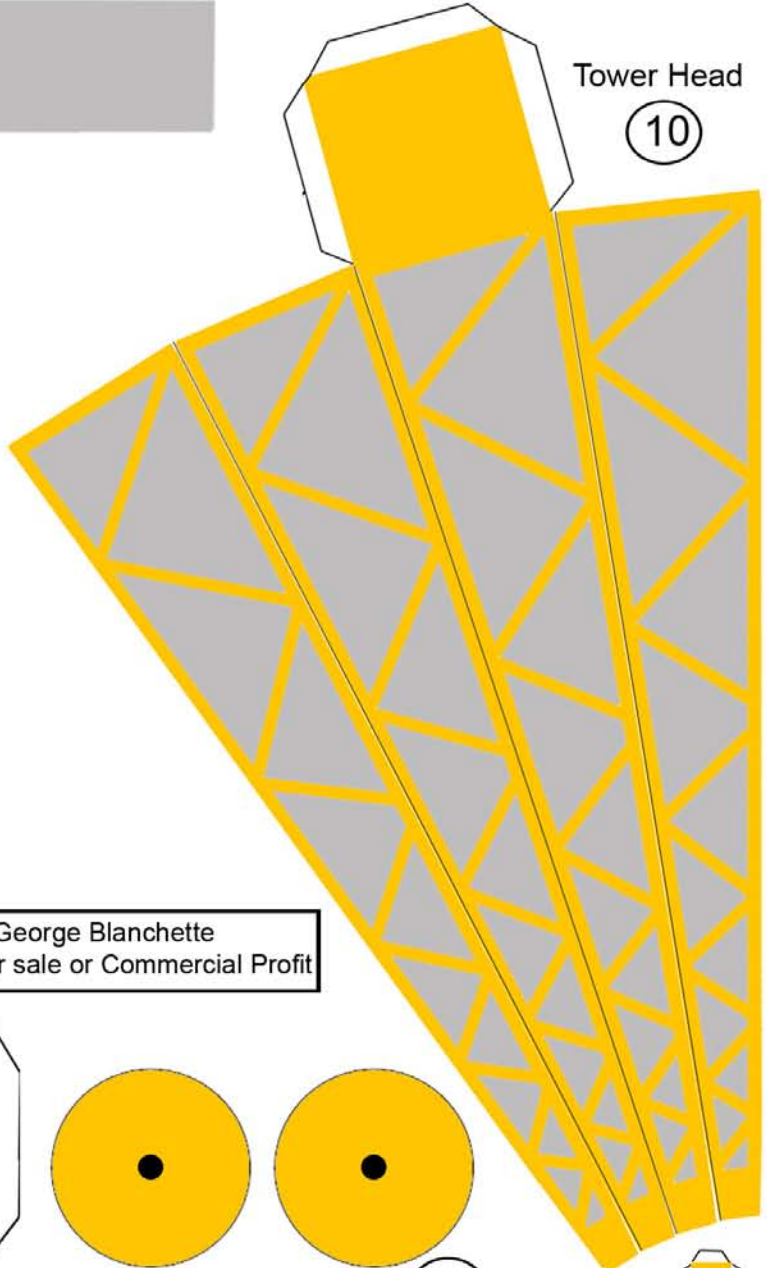
4

Cab



Tower Head

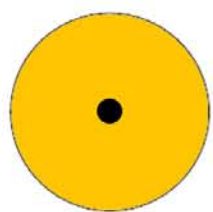
10



© 2008 George Blanchette  
Not for sale or Commercial Profit

LIEBHERR

LIEBHERR



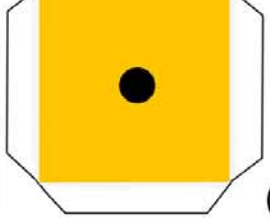
(Trim to fit) Slewing Platform

3

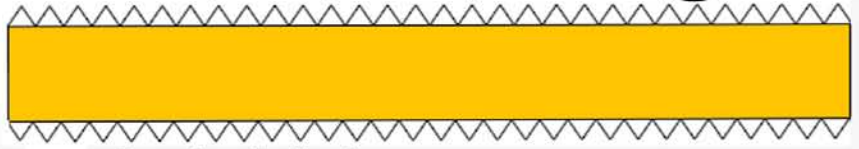
Top Cap

Tab

End Cap



7



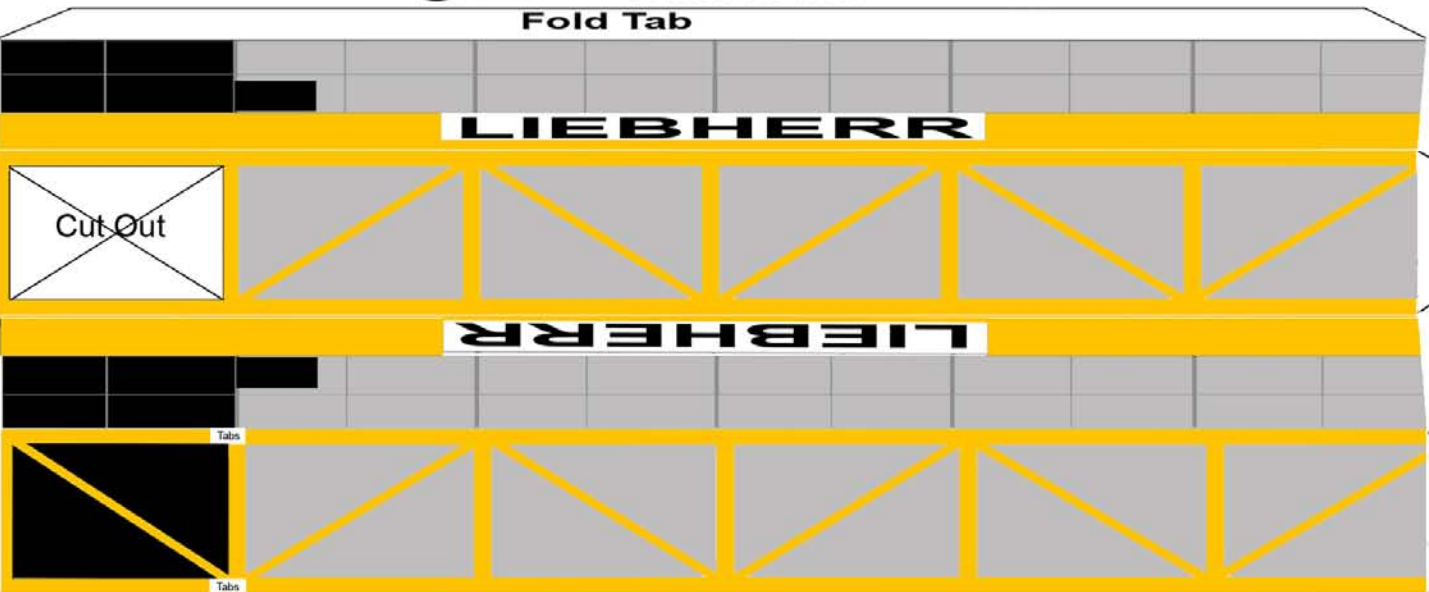
Counter Jib Heel

Fold Tab

Support Tab

12

Support Tab



Fold Tab

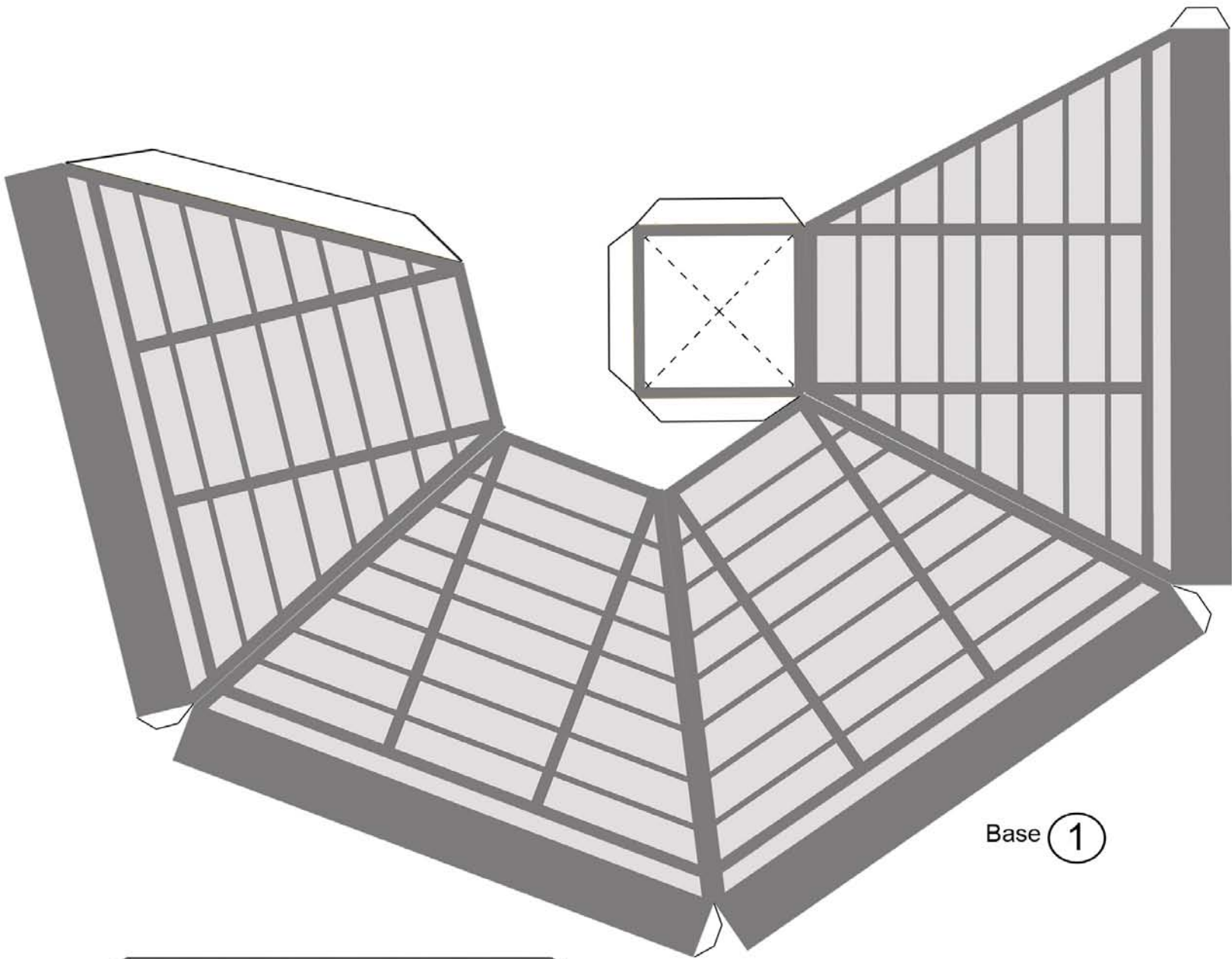
12

Fold Tab

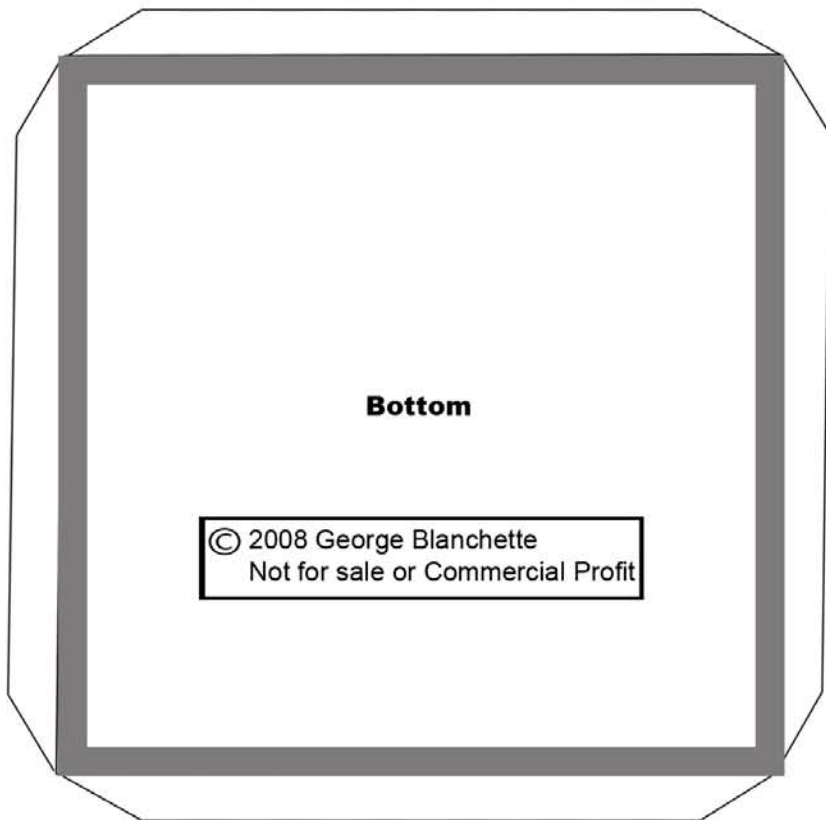
Tab

Tab

Cut Out



Base 1



**Bottom**

© 2008 George Blanchette  
Not for sale or Commercial Profit

Add weight to bottom  
before glueing in place